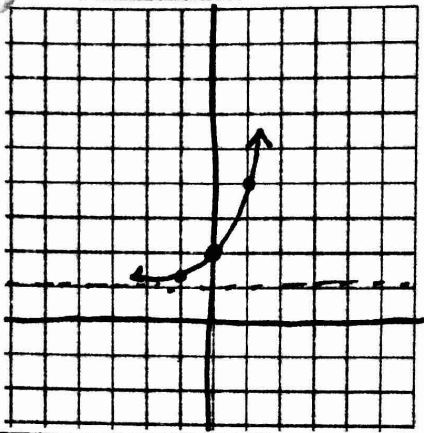


Pre-Calculus
Exponential Graphing Practice

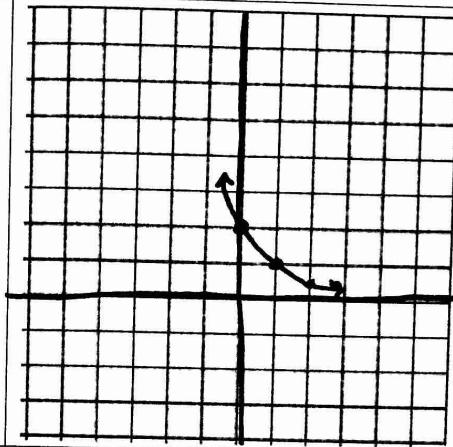
Name Answer Key
Collected / Not Collected

Graph each equation. State the domain and range for each function.

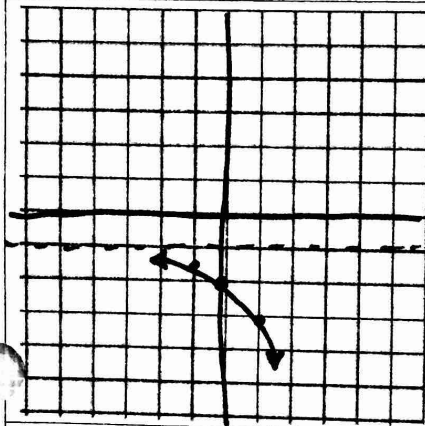
ynth



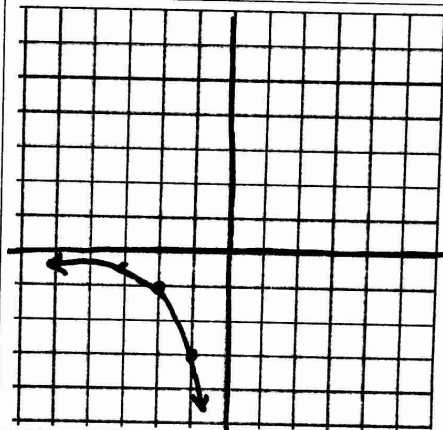
$$f(x) = 3^x + 1$$



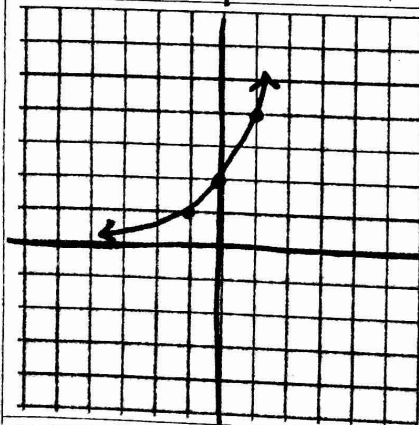
$$f(x) = \frac{1}{2}^{x-1}$$



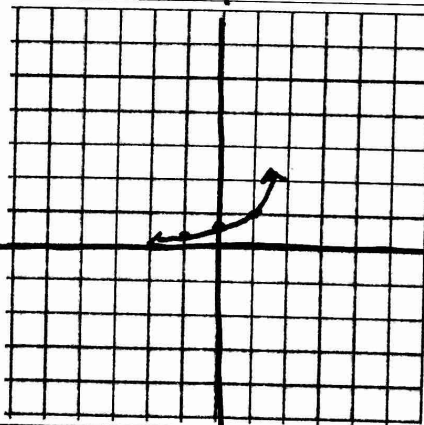
$$f(x) = -2^x - 1$$



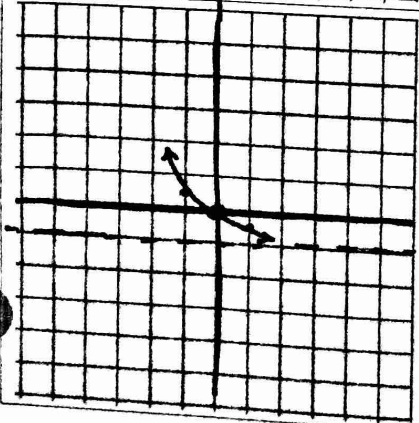
$$f(x) = -3^{x+2}$$



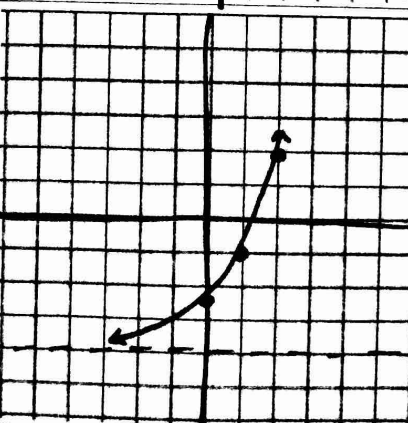
$$f(x) = 2(2)^x$$



$$f(x) = \frac{1}{2}(2^x)$$



$$f(x) = \frac{2}{3}^{x-1} - 1$$



$$f(x) = 3(2^{x-1}) - 4$$